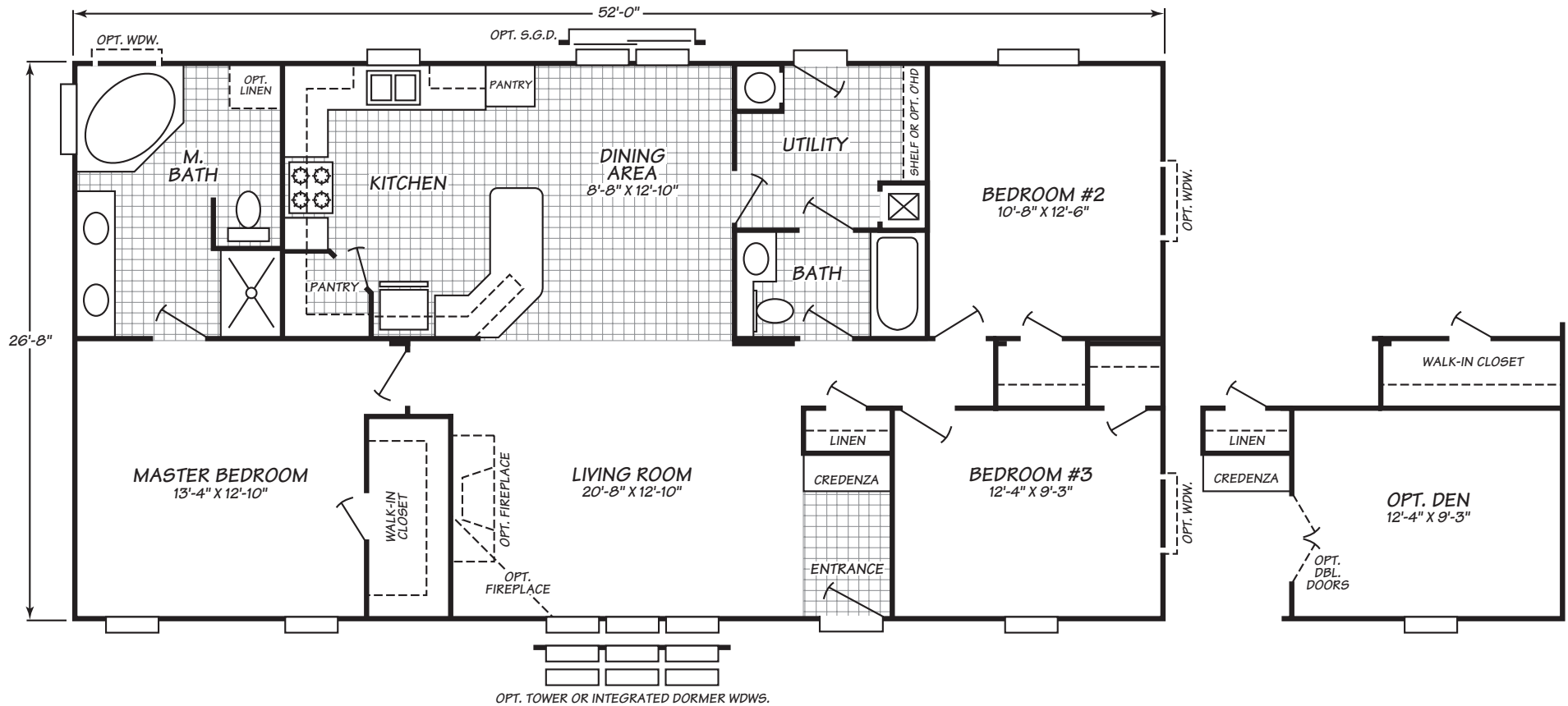


# Celebration II Series Model 4523F

3 Bedrooms • 2 Baths • 1,386 Square Feet



Windows shown reflect standard aluminum windows. Selection of optional thermal pane (vinyl) windows may affect the size and number of windows.

Fleetwood Homes reserves the right to change colors, prices, specifications, models, dimensions and materials without notice. Rendering and diagrams are meant to be representative and, in keeping with Fleetwood's policy of constant updating and improvement, may vary from the actual home. All dimensions are nominal and approximated. Square footage is measured from exterior wall to exterior wall, and is an approximate figure. Length indicated in floorplans is floor length only. The length of the hitch is not included. (Add four feet to arrive at transportable length.) Ask your retailer for specifics. PRICES AND SPECIFICATIONS SUBJECT TO CHANGE WITHOUT NOTICE OR OBLIGATION.

**Interior**

**Tape & Texture in All Dry Areas with Square Corners** Finished, textured drywall enhances home appearance-choose from range of paint colors

**Textured Ceiling** Residential look and no painting required

**1/2" Rebond Carpet Pad** The most popular carpet pad installed today offers longevity and comfort

**16 oz High Performance, 100% Nylon Carpet** Long-wearing performance carpet in a wide variety of color choices

**Entry Linoleum** Reduces wear on carpet.

**2 1/4" Door Casings** A residential "detail" typical of quality construction

**Flat Interior Doors** Easy to clean - Finished look

**Recessed Lighting** Smooth contemporary design.

**Wire Shelf in Utility Room** Organize and hang clothes in your utility room.

**Metal single lever faucets** Attractive and built to last.

**Exterior**

**2X6" Exterior Wall Frames, 16" on Center** Superior structural strength – the standard in residential construction

**Gaf Fiberglass Shingles** Long-lasting & attractive.

**Cempanel Siding** Fiber cement fiber siding is designed to withstand the elements

**4" Cempanel Window Trim** Attractive exterior trim that resists the elements.

**36" Six Panel Exterior Doors** Elegant design with width to move in larger furnishings

**6" Eaves** Attractive residential look.

**12" Front and Rear Overhangs** Increased weather protection for your home's exterior and a finished residential appearance

**R22/R11/R11 Insulation** Standard energy efficient insulation package.

**30 Lb. Per Square Foot Roof Load** Structure engineered for extra strength to handle snow and wind loads

**Aluminum Dual Glazed Windows** Easy to clean and energy efficient.

**Bath**

**42" Height Vanity Mirrors** Designer home detail.

**36" High Countertops in Master Bathroom** Designed for convenience and comfort

**60" Multi Piece Tub Showers** Durable, attractive, and easy to clean.

**Metal Chrome Single Lever Faucet** Long lasting easy to use design.

**Towel Bar & Tissue Holders** Ready to move in with the convenience of towel and tissue placements

**4" Ceramic Tile Backsplash** Attractive and easy to clean.

**Strip Lights Above Sinks** Hollywood marque lighting is bright and decorative

**Tub Swags** Decorative details for a designer touch

**Shut Off Valves Throughout Home** Quickly shut off water for repairs or in an emergency

**Kitchen**

**Cityscape Cabinets** Spacious, durable, and appealing design for a custom kitchen style.

**2 1/2"Kitchen Cabinet Crown Molding** A residential "detail" typical of quality construction

**Lined Overhead Cabinets** Lined cabinets are easier to clean and storage ready

**Recessed Lighting** Designer detail enhances kitchen lighting

**Raised Panel MDF Cabinet Doors** Attractive and easy to clean

**Adjustable Overhead Shelves** Ease of use for all size items.

**Ceramic Tile Backsplash** Ceramic tile backsplash protects surfaces and adds designer look

**Metal Chrome Single Lever Faucet** Stylish and easy to use.

**Free Standing Gas Range** Provides outstanding ease of use and living enjoyment

**18 Cubic Foot Frost Free Refrigerator** Reduce cost with energy efficient appliances.

**Utilities, Safety & Energy**

**200 Amp Electrical Panel Box** Designed and installed for safety, easy access and ample household capacity

**30 Gallon Dual Element Water Heater** Abundant hot water supply for laundry, bath, and kitchen

**Wire Shelf in Utility Room** Organize laundry supplies.

**Dual Pane Aluminum Windows** Easy to clean and low maintenance.

**Ceiling Lights in All Bedrooms** All the lighting you will need with easy to clean fixtures

**All Whirlpool Appliances** Trusted name and dependability

**Whole House Shut-Off Valves** Quickly shut off water for repairs or an emergency.

**Gas Furnace** Clean, safe, high-efficiency heating

**Porch Lights At Front and Rear Entries** Added safety and security at night.

**Plumbed and Wired For Washer and Dryer** Provides convenient hookup

**Options**

**Whirlpool® Appliance Packages** Add or upgrade your appliances to suit your taste.

**Upgrade Molding Package** Upgraded molding throughout home.

**Deluxe Carpet Upgrade** Luxurious, heavier weight carpet in designer colors.

**Hardwood Raised Panel Cabinet Doors** Long-lasting and beautiful, enriches the appearance of kitchen cabinets

**Choice of White, Black, or Stainless Steel Appliance Packages** Whirlpool® appliances are easy of use and offer piece of mind.

**50 Gallon Gas or Electric Hot Water Heater** More hot water for larger families.

**Garbage Disposal** Added convenience for cooking and cleaning

**Moen® Faucets** Upgrade to the famous quality and beauty of Moen&Reg; faucets

**Wood Closet Shelves and Rods** Residential look and design.

**Wood or Gas Fireplace** Adds warmth to your living space.